

12TH ANNUAL SUSTAINABLE LIVING EMPOWERMENT CONFERENCE

EDUCATE. INNOVATE. SUSTAIN

EMBRACE THE GREEN ECONOMY

Sustainability is the practice of meeting current needs without compromising the ability of future generations to meet their own needs. Our goal is to pave the way for a sustainable future with equitable green jobs by 2035!



Jeana Wirtenberg Ph.D.
Executive Director, Rutgers Institute for Corporate Social
Innovation at Rutgers Business School



Kim Gaddy
Founder and Executive Director of the South Ward
Environmental Alliance, (SWEA)

INVEST IN EDUCATION

Early green curriculum to inspire future generations and create a sustainable workforce.
"Transformational change starts and ends with the community."
— Kim Gaddy

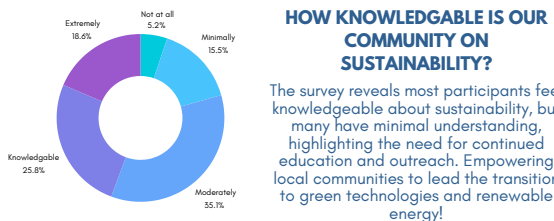


INNOVATE FOR IMPACT

John J. Sarno, Esq emphasized accessible choices, accountability, positive environmental impact, diverse skills, and living wages in urban areas to motivate the next generation despite educational costs and deskilling risks



Facilitator: John J. Sarno, Esq



WAYS TO INCREASE KNOWLEDGE ON SUSTAINABILITY BY:

- Community Engagement and Empowerment:** Empower residents by involving them in decision-making processes and community development initiatives. Establish community centers, neighborhood councils, and platforms for dialogue to ensure that voices of urban residents are heard and valued.
- Policy and Advocacy:** Advocate for policies at local, regional, and national levels that promote equity and social justice. This includes policies on affordable housing, fair employment practices, environmental sustainability, and equitable access to resources.
- Education and Skill Development:** Implement programs that provide quality education and skill development tailored to the needs of urban residents. This includes vocational training, adult education, and programs that teach digital literacy and other essential skills for the modern job market.

CREATE EQUITABLE OPPORTUNITIES

- Solar Panel Installer:** Installing and maintaining solar energy systems.
- Urban Farmer:** Growing food in urban areas using sustainable practices
- Environmental Educator:** Teaching communities about sustainability and conservation

12TH ANNUAL SUSTAINABLE LIVING EMPOWERMENT CONFERENCE

GREEN DEVELOPMENT. REAL SOLUTIONS



COMMUNITY GREEN DEVELOPMENT

Merging sustainable agriculture with advanced green technologies for a holistic approach to societal well-being



Tobias Fox
Founder/Managing Director of Newark SAS
inc



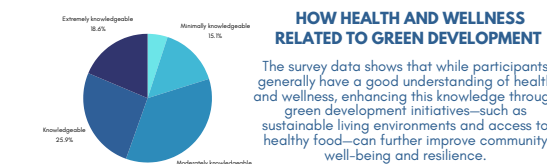
RUTGERS INSTITUTE FOR CORPORATE SOCIAL INNOVATION

Special thanks to RICSi for Partnering with Newark SAS! RICSi promotes the idea that businesses can address profound societal needs and aim to develop the next generation of Corporate Social Innovation leaders, becoming a key academic partner in solving pressing issues.

HIGHLIGHTS OF THE CONFERENCE

Roundtable Discussions Main takeaways

- Sustainable Agriculture:** Support community green urban farms, tree planting, and the use of native plants to enhance local ecosystems and food security.
- Green Technology Integration:** Promote the use of green technologies, such as renewable energy sources, sustainable construction materials, and green infrastructure in urban planning.
- Community Engagement:** Empower residents by involving them in decision-making processes and community development initiatives to ensure their voices are heard and valued.
- Education and Training:** Implement programs that provide education and skills development tailored to community needs, including vocational training, adult education, and digital literacy programs.



HOW DO WE PROMOTE GREEN DEVELOPMENT?

DEVELOPMENT WITH ECOLOGICAL INFRASTRUCTURE IN MIND

Eco-Friendly Parks: Designing parks with natural elements that promote biodiversity and environmental education.



Rain Gardens: Creating gardens designed to absorb and filter rainwater.



SUSTAINABLE AGRICULTURAL PRACTICES

Urban Agriculture: Growing food in urban areas using methods like rooftop gardens, vertical farming, and community gardens to increase local food production.

Renewable Energy Use: Utilizing solar, wind, and other renewable energy sources to power agricultural operations and reduce carbon footprints.

Plant Trees and Shrubs: Add trees or shrubs to your garden to support the environment and soil.

12TH ANNUAL SUSTAINABLE LIVING EMPOWERMENT CONFERENCE



COMMUNITY-FIRST PHILANTHROPY

ENGAGE, SUPPORT, EMPOWER

"As a anchor institution Rutgers takes pride in contributing to key opportunities within the city of Newark and throughout the state of NJ to address the current issues that impact sustainability." —Vice Chancellor Shanté Palmer, Rutgers Newark.



Shante Palmer
Vice Chancellor External and Governmental
Relations at Rutgers University
Jeana Wirtenberg Ph.D.
Executive Director of RICSi



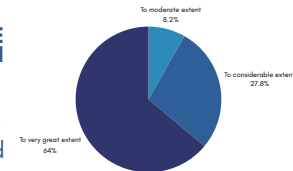
CORPORATE CONTRIBUTIONS

Amplifying the impact of local organizations by leveraging **corporate strengths** and **resources**.

Thanks to
Newark Whole Foods Market for
donating fresh produce and baked
goods for the conference!

COMMUNITY-DRIVEN CHANGE, HOW WILLING ARE PEOPLE TO TAKE ACTION ON GREEN EFFORTS?

Supporting grassroots initiatives with meaningful corporate engagement and authentic partnerships



Dr. Jacquelyn Bido
CSO Newark SAS inc

REDEFINING PHILANTHROPY

Philanthropy goes beyond monetary contributions; it's about fostering a genuine love for the community and actively engaging in its development. It involves empowering local residents, advocating for fair policies, and implementing education and training programs tailored to community needs.

ACCOUNTABLE PHILANTHROPY



Community Foundations: Organizations that involve local communities in decision-making processes.

Long-Term Commitments: Philanthropic efforts like the Ford Foundation's commitment to ending inequality, focusing on systemic change rather than short-term fixes.



Ethical Investing: Foundations that practice mission-related investing to ensure their endowments support their philanthropic goals..

12TH ANNUAL SUSTAINABLE LIVING EMPOWERMENT CONFERENCE

NUTRITION FOR EVERY NEIGHBORHOOD



BUILDING HEALTHY FOOD NETWORKS

Ensuring equitable access to nutritious and sustainable food for all communities. "Minimize solving for hunger and talk about solving for health."
—Chesha Hodge



Chesha Hodge
MPA RDN
Coalition Director,
HFN's Greater Newark Conservancy



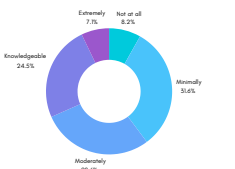
Kelly Hayes
Director of Community Impact MEND

NUTRITION FOR ALL

Addressing food deserts and promoting healthy choices through education and outreach. Kelly Hayes from MEND gave great insight on the logistics of food pantries and expressed the importance of providing healthy produce choices to those in the community.

EQUITABLE FOOD ACCESS

Data collected indicates that awareness about healthy food access and urban agriculture is varied, with many participants expressing only minimal to moderate knowledge, highlighting an opportunity to enhance community education in these areas.



HIGHLIGHTS FROM THE PANEL

- Education:** Improve education on healthy food choices at home and school.
- Accessibility:** Community gardens and home-grown foods enhance ingredient control.
- Motivation:** Government and community support promote healthier eating habits.



INNOVATIVE APPROACHES

BUILDING FOOD NETWORKS



**FARM-TO-SCHOOL
PROGRAMS**



**COMMUNITY SUPPORTED
AGRICULTURE (CSA)**



URBAN AGRICULTURE



**EMPOWERING
COMMUNITIES**